

## LLJZS73 Series pull switch 系列安全拉线开关

### 产品性能 Performance

安全拉线开关的安装要保证从机器设备任何一处都可操动到，通过拉及预张紧的拉绳子而产生一个紧急停止的信号。

Emergency stop pull-wire switches are employed wherever an emergency stop command must be available at any point on a machine, device or plant. An emergency stop command is triggered when pulling the pretensioned tug line.

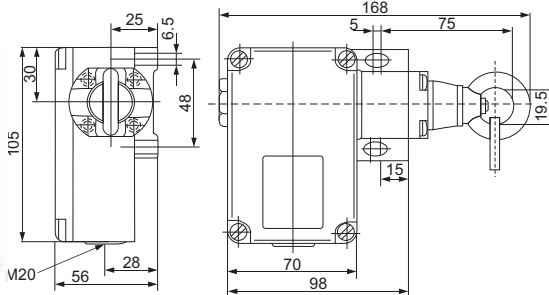
LLJZS73含一肯定断开的常闭触点和一个常开触点；LLJZS73 2Ö含二个肯定断开常闭触点。

当拉绳被拉紧时，触点21-22及41-42（见图2）闭合，触点13-14断开。当拉绳被拉（图1）拉绳断开（图3）时，触点21-22断开，触点13-14闭合、对带锁定的拉线开关，比如LLJZS73V，当开关被拉绳断开时，常闭触点21-22断开和常开触点13-14闭合状态被锁定位，解锁可通过直接头VD或钥匙开锁VS来解锁。

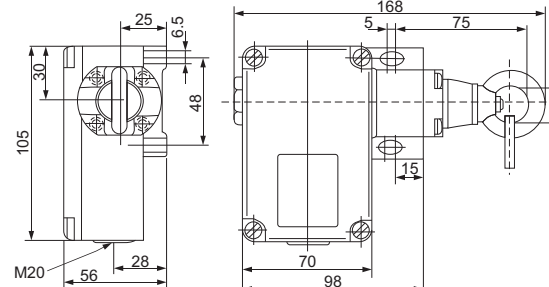
The switches LLJZS 73 and LLJZS 75 are equipped with a positive break normally closed contact together with an additional normally open contact. Switch LLJZS 75 2Ö/2S has two positive break normally closed contacts with two additional normally open contacts. The model LLJZS 73 2Ö has two and the type LLJZS 75 4Ö four positive break normally closed contacts.

With the wire pretensioned the contacts 21-22 or 41-42 (as per Fig.2) are closed and 13-14 are open. Contacts 21-22 open and 13-14 close if the wire is pulled (Fig.1) or breaks (Fig.3). With emergency stop pull-wire switches with latching e.g. ZS 73 V or ZS 75 V, contacts 21-22 are latched in the opened and 13-14 in the closed condition if the wire is pulled or in case of wire break.

Unlatch the contacts by using push button VD or key turn with VS-units.

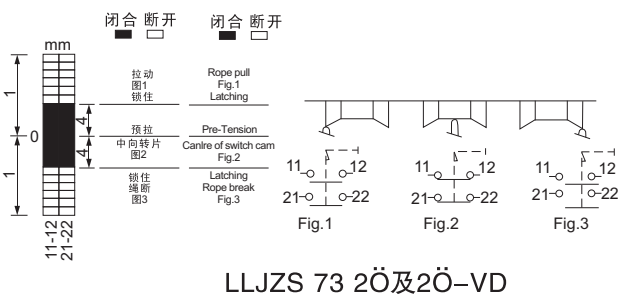


- LLJZS73-11—常开—常闭1NO1NC (自动 automatic)
- LLJZS73-02二常闭2NC (自动 automatic)
- LLJZS73-20二常开2NO (自动 automatic)
- LLJZS73-11VD—常开—常闭1NO1NC (手动 manually operation)
- LLJZS73-02VD二常闭2NC (手动 manually operation)
- LLJZS73-20VD二常开2NO (手动 manually operation)
- LLJZS73-11VS—常开—常闭1NO1NC (带钥匙手动 manually operation with key)
- LLJZS73-02VS二常闭2NC (带钥匙手动 manually operation with key)
- LLJZS73-20VS二常开2NO (带钥匙手动 manually operation with key)

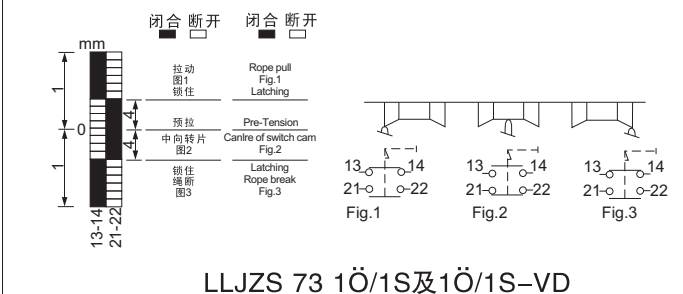


- LLJZS73-11W—常开—常闭1NO1NC (自动 automatic)
- LLJZS73-02W二常闭2NC (自动 automatic)
- LLJZS73-20W二常开2NO (自动 automatic)
- LLJZS73-11WVD—常开—常闭1NO1NC (手动 manually operation)
- LLJZS73-02WVD二常闭2NC (手动 manually operation)
- LLJZS73-20WVD二常开2NO (手动 manually operation)
- LLJZS73-11WVS—常开—常闭1NO1NC (带钥匙手动 manually operation with key)
- LLJZS73-02WVS二常闭2NC (带钥匙手动 manually operation with key)
- LLJZS73-20WVS二常开2NO (带钥匙手动 manually operation with key)

### 开关行程图 LLJZS 73...Switching Diagram LLJZS 73...



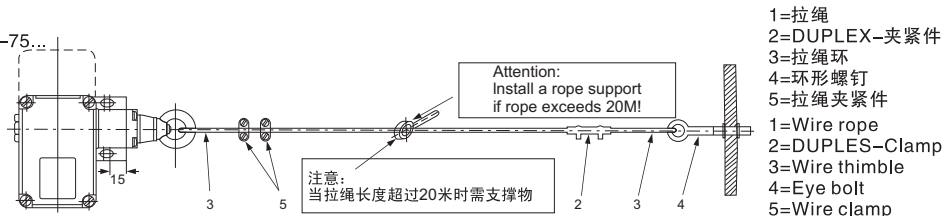
LLJZS 73 2Ö及2Ö-VD



LLJZS 73 1Ö/1S及1Ö/1S-VD

图1: 作用原理LLJZS73...及LLJZS 75...

ILL.1: Operation of LLJZS 73...or LLJZS-75...



- 1=拉绳
- 2=DUPLEX-夹紧件
- 3=拉绳环
- 4=环形螺钉
- 5=拉绳夹紧件
- 1=Wire rope
- 2=DUPLEX-Clamp
- 3=Wire thimble
- 4=Eye bolt
- 5=Wire clamp